

GARAGE FORCE

LIQUID CRACK REPAIR – Spalling and Low Spots

Spalling is damage caused by salt penetration into the concrete and a chemical reaction that breaks down the surface creating pits, holes, and an overall rough surface on the slab. This can also be caused by water penetration and freezing, thus forcing the brittle concrete away from the surface. As Garage Force coatings are not typically installed as “high build”, this type of damage could show through the final finish if not repaired during the preparation phase of installing a coating. Liquid Crack Repair can be used to overfill spalled concrete, and after re-profiling is complete the surface will be smooth, level, and acceptable for coating. Below are the proper procedures to make sure that the Liquid Crack Repair both bonds to the concrete surface and allows our coatings to adhere.

SPALLING REPAIR

Spalling repair should only be attempted once the floor has been ground using a planetary grinder with diamond tooling or shot blasting has prepared the surface. This will knock down the high spots in the concrete and begin the process of levelling the floor. Oil spots and contamination should be cleaned and removed using a citrus based cleaner or Simple Green and allowed to completely dry before moving forward. Moisture left in the concrete will cause the Liquid Crack Repair to bubble and outgas as it cures.

NEVER MIX MORE THAN 1 PART LIQUID (A + B) TO 1 PART SAND.

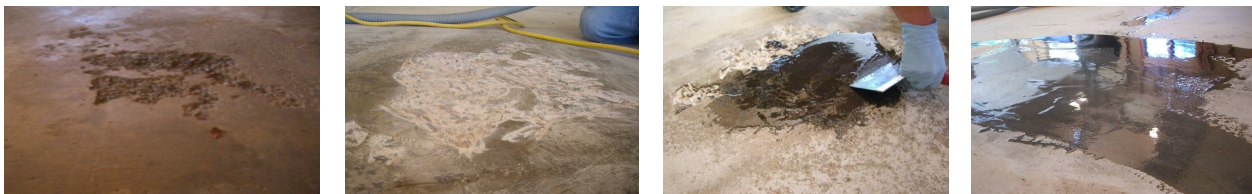
Use the Liquid Crack Repair with sand mixture to fill the majority of the void in the concrete. It will always be best to use a batch of straight Liquid Crack Repair without sand to apply the final layer over the repair. This mix will be thinner and self-level better without having to trowel it in place. The result will be a large, flooded area that can be ground flat once cured.

RE-PROFILING ONCE CURED

When the Liquid Crack Repair has cured - usually about 15-25 minutes - it will be light grey in color and hard to the touch. **Reprofiling of the Liquid Crack Repair is required before coating.** It is a ready to grind when it is resistant to fingernail marking. Grind the Liquid Crack Repair flush with the slab using a hand grinder, or planetary grinder and make sure the repaired area is smooth and level. It will be best to use the hand grinder on cracks, and the planetary grinder on spalled areas.

Always remember to grind PERPENDICULAR to the crack you filled and fan out the repair 12” to eliminate any tool marking.

Grinding in-line with the repair can cause a trough to form, which ends up looking worse than the crack and can show through the coating. This will be very important on softer concrete floors and floors that are not level.



Always reference the Technical Data Sheet for product information, recoat time and application restrictions.

GARAGE FORCE 1601 RAMSEY PL LA CROSSE, WI 54603
855-436-7230

Contact a member of the Garage Force Technical Team for additional information.